



# PADMA

CLUSTER BHARATA

PANTAI INDAH KAPUK 2







# SITE PLAN





## EDUCATION



ST. JOHANNES  
BERCHMANS SCHOOL  
1.2 Km



HOPE ACADEMY  
1.8 Km



UNIVERSITAS  
PELITA HARAPAN  
1.8 Km



UNIVERSITAS  
PRASETIYA MULYA  
2 Km

Some of the most respected schools are within easy reach of Padma PIK2.  
Offering unmatched educational opportunities close to home.

## ENTERTAINMENT

### ALOHA PASIR PUTIH



*A tropical culinary destination inspired by Hawaii, featuring a beach landscape with white sand and laid-back island vibes.*

### INDONESIA DESIGN DISTRICT



*Indonesia Design District is the biggest Design & Furniture Center in Indonesia, a one-stop home & living furniture center.*

### LAND'S END



*Land's End is an exciting seaside destination with breathtaking views from the iconic lighthouse, to exotic nightlife, to a variety of culinary delights.*

### ORANGE GROVES



*A charming thematic destination inspired by the orange groves of Sicily, Italy. Nestled alongside a river, this area features a restaurants, cafes and specialty stores*



## S P O R T S



VERDE SPORT HUB  
0.85 Km



ATLAS POLO CLUB  
1.6 Km



GALAXY SPORT CENTER  
2.5 Km

A range of esteemed sport facilities are conveniently located near Padma PIK2.  
From Verde Sports Hub, Atlas Polo Club, to Galaxy Sports Center, residents can enjoy an active lifestyles

## C U L T U R E & R E C R E A T I O N

TAMAN DOA  
OUR LADY OF AKITA  
200 m



*Inspired by the Our Lady of Akita Prayer Garden in Japan, the site is a spiritual pilgrimage destination, featuring a lush Japanese-themed garden as well as a reflective lake for moments of contemplation.*

NUSANTARA INTERNATIONAL  
CONVENTION EXHIBITION  
2 Km



*With eleven exhibition halls, pre-function hall, main atrium and outdoor area, NICE spans over 40 hectares of land, and is one of the largest convention centers in country.*

GREENBELT  
1 Km



*The 60-Hectare green space recreational area is filled with outdoor facilities, from jogging tracks, gardens, bicycle lanes, playgrounds and retail spaces, and is designed to provide a reclusive retreat in an urban landscape.*



# HEALTHCARE

## BECAUSE HEALTH ALWAYS COMES FIRST

Discover state-of-the-art healthcare facilities such as RS Hermina (900 m) and Tzu Chi Hospital, find top-tier specialists within minutes of your home.





# AREA DATA

PADMA

45<sub>ha</sub>

CLUSTER BHARATA

9.2<sub>ha</sub>





# CLUSTER FACILITIES

## LAKESIDE TRACK



Enjoy the jogging track by the lake, bask yourself in a refreshing sunlight with a beautiful lake vista in the background. Bring your pet alongside you and savor the little yet joyful moments in life.

## CLUSTER PARK



PADMA at PIK2 is thoughtfully designed with a lush central park and serene green spaces, offering residents a refreshing retreat right at their doorstep

## EV CHARGING STATION



Embrace the future at PADMA with dedicated EV charging stations, ensuring sustainable and convenient living for modern lifestyles.



# PREMIUM CLUB

An elegant social space, our premium clubhouse provides the perfect venue to play, work & mingle.

A peaceful haven to deck-out or work-out in a modern, well-equipped gym.





# SERVICES

## VIP SERVICES



Your concierge is at your back call to  
Ensure your every need is catered for:

- Parcel reception
- Reserve Premium Club Facilities
- Repair & Maintenance Assistance
- Book Taxis

## 24 - HOUR HEALTHCARE SERVICES



**TZU CHI HOSPITAL**  
COMPASSION WITH EXCELLENCE

24-hour healthcare service is here to provide  
expert medical attention whenever you need it,  
ensuring your health and well-being are always  
our priority.

## 24 - HOUR SECURITY



Designed to ensure the safety and well-  
being of all residents, the cluster double-gate  
System serves as a checkpoint with 24-hour  
security guards.

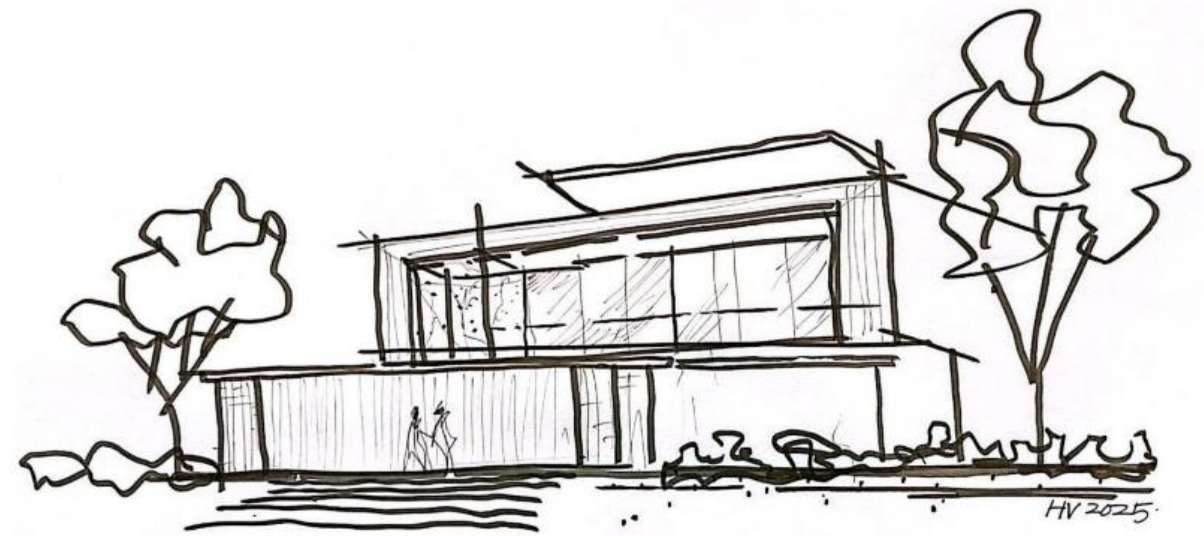


# GATEWAY TO PADMA PIK2,

offering double gate 24 Hours security and striking first impression.







THE MAIN SPACE IS SURROUNDED BY GARDENS.  
A SPACIOUS LIVING AREA, ENHANCED BY LARGE, WIDE OPENINGS.  
DRAMATIC AND CAPTIVATING VIEWS.

DESIGNED BY



HADIVINCIENT ARCHITECTS

*A three-garden concept: front garden, courtyard,  
and rear garden.*







TYPE.

15

15x30 m | 15x35 m

BATHROOM

4+1

BEDROOM

4+1







BACK ELEVATION

ELEGANCE BEYOND WALLS

A harmonious open design connects your home with nature, creating a comfortable space that blends seamlessly with its surroundings.



# POOLSIDE PARADISE



Exclusive pool offers a front-row seat to stunning lake views. Designed for those who appreciate beauty and tranquility, this premium poolside retreat blends modern elegance with the soothing presence of nature.





# PADMA

## CONCEPT

### 50%

GREEN AREA

enhances the home's aesthetic and environmental quality, promoting better air circulation and connection with nature

### 30%

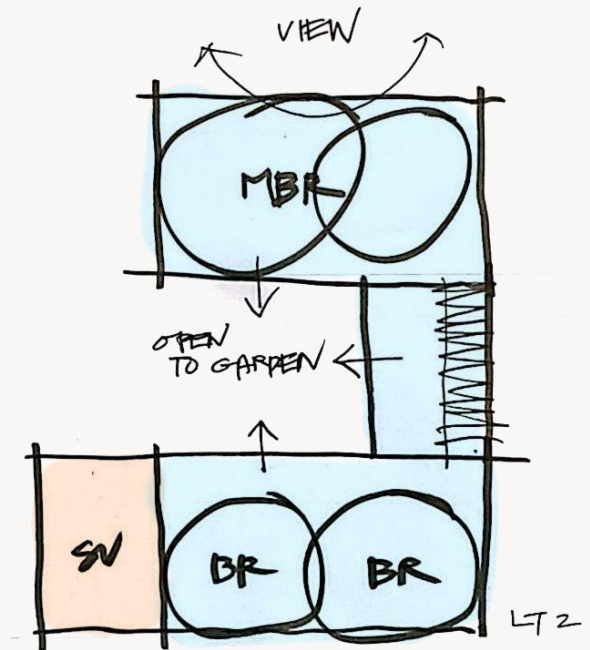
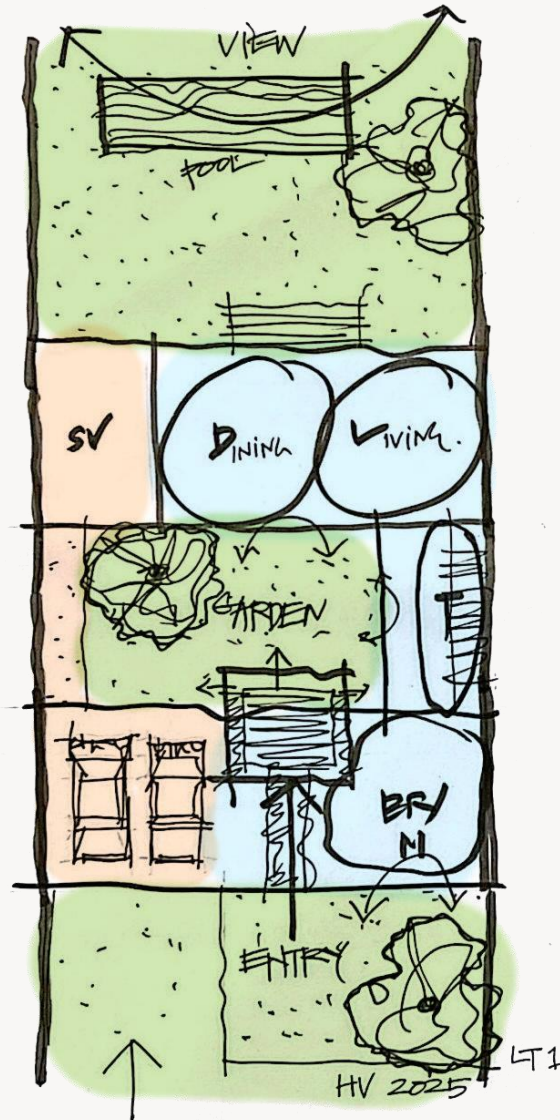
PRIVATE AREA

designed for comfort and relaxation, prioritizes privacy and tranquility, ensuring a restful environment for residents.

### 20%

SERVICE AREA

consists of functional spaces that support daily household activities.

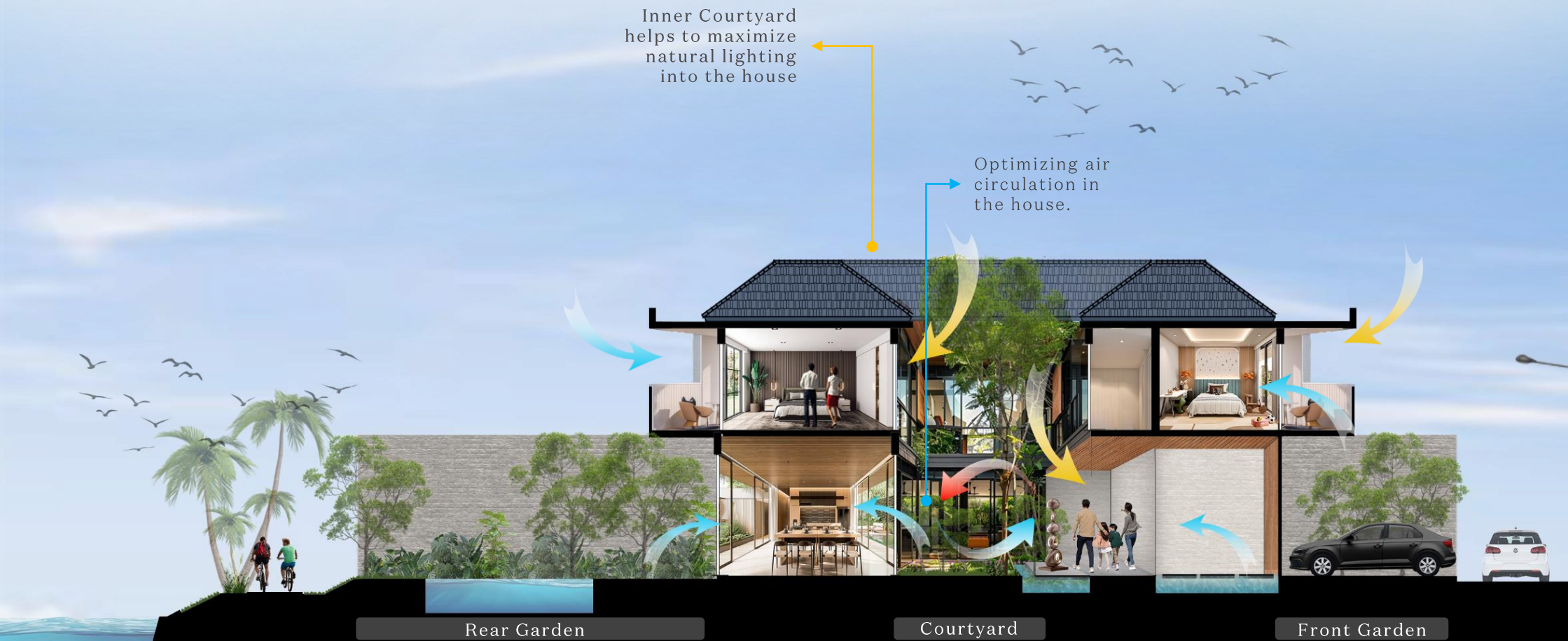




## THREE GARDEN CONCEPT

**50%**  
GREEN AREA

*The three garden concept that surround the building makes the indoor space feel cooler, healthier, and ensures optimal comfort.*





TYPE.

15

15x30 m

BATHROOM

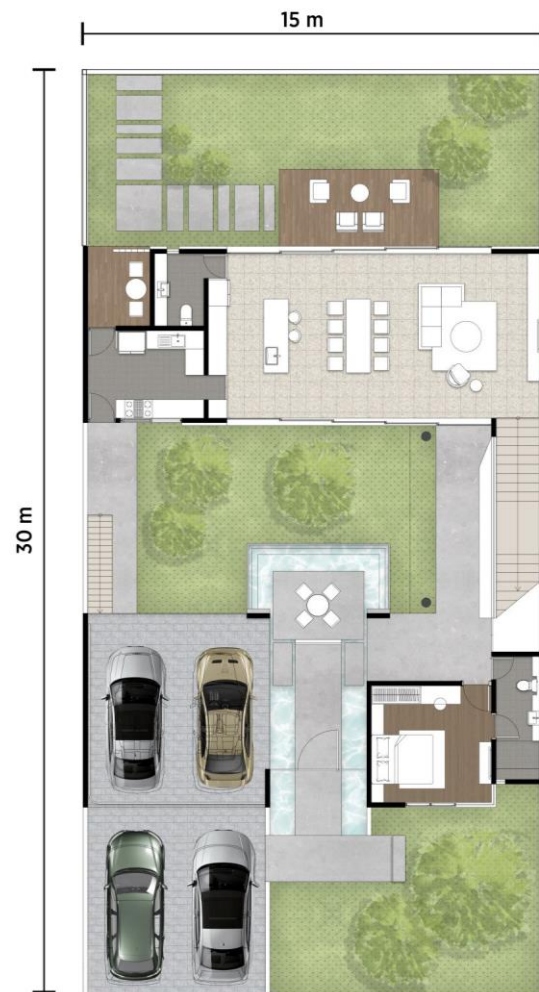
4+1

BEDROOM

4+1

POWDER ROOM

1



LANTAI 1



LANTAI 2





TYPE.

# 15

15x35 m

BATHROOM

4+1

BEDROOM

4+1

POWDER ROOM

1



LANTAI 1



LANTAI 2





SPACE, CRAFTED

LIVING ROOM





MASTER BEDROOM

LUXURY HAVEN









Our facilities are designed to provide a reclusive retreat for everyone – for the mind to contemplate, the body to relax and soul to rejuvenate.



PERFECT HARMONY BETWEEN  
*Nature AND Modern Living*







IMMERSIVE GREEN SANCTUARY



# DESIGNED LANDSCAPE

*blends lush greenery with water features,  
creating a tranquil escape from the city.*







SMART  
CURTAIN



SMART  
LED



SMART  
DOOR/WINDOW  
SENSOR



SMART  
CCTV



SMART  
IR REMOTE



SMART  
DOOR LOCK



24 HOUR  
CALL SERVICE



PANIC  
BUTTON

SMART HOME SOLUTIONS



PADMA



FOR INQUIRY  
021 588-8000

[www.pik2.com](http://www.pik2.com)

 [pik2official](#)

 [pik2 sedayu indo city](#)

DEVELOPMENT BY



**Agung Sedayu Group**



**SALIM GROUP**

DISCLAIMER

While all reasonable care has been taken in preparing this Booklet, the developer and its agents shall not be held responsible for any inaccuracies or omissions. All statements are believed to be correct but shall not be regarded as statements or representations of fact. Rendering and illustrations are artist's impressions and give only an approximate idea of the project and should not be relied as representations in respect of the development. Floor plan and other measurements are approximate only and are subject to final survey. All information, plans, and specifications are current at the time of print and are subject to changes as may be required and approved by the developer and / or the relevant authorities. The developer reserves the right to modify any part of the development prior to completion as directed or approved by any authority.